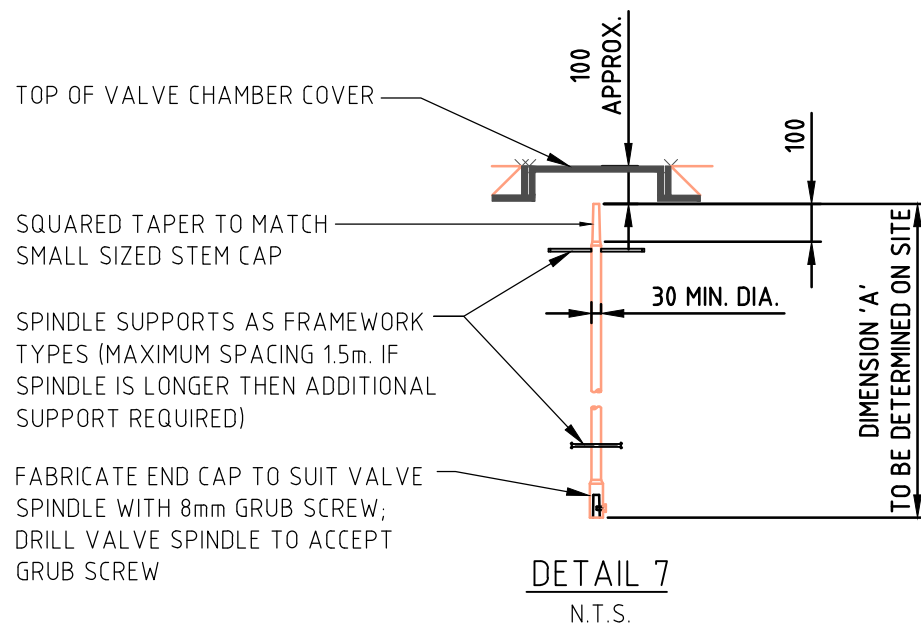
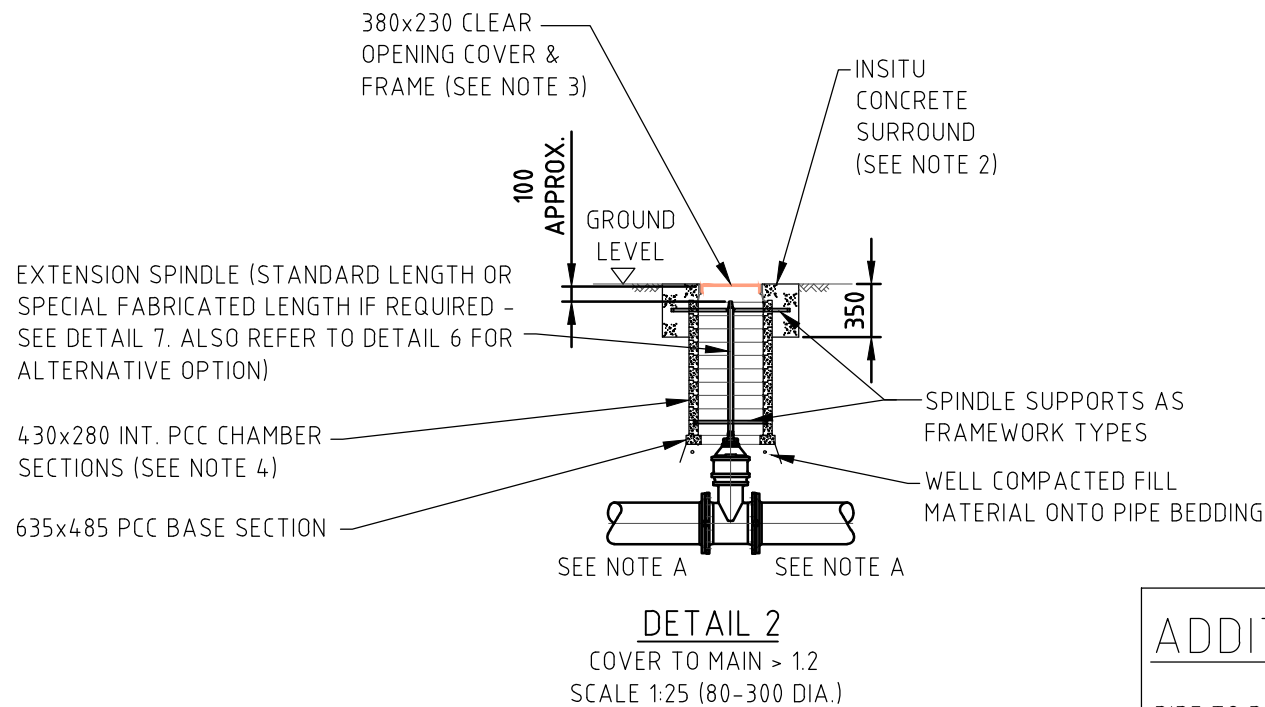


**NOTE**  
ALL VALVES TO BE  
CLOCKWISE CLOSING.



**ADDITIONAL INFORMATION**

PIPE TO BE RESTRAINED (INCLUDING VALVE) TO ENABLE SAFE OPERATION OF VALVE AND MAINTENANCE TO INCORPORATED APPARATUS. THIS IS TO BE DONE USING EITHER OF THE BELOW METHODS (A SINGLE VALVE ONLY NEEDS RESTRAINING UPSTREAM):

1. WELDED PUDDLE FLANGE CAST WITHIN REINFORCED CONCRETE THRUST BLOCK FOR NON RESTRAINING PIPE, WITH SELF ANCHORING ASSEMBLY TO VALVE.
2. ANCHOR GASKETS FOR SPIGOT SOCKET PIPES CAN BE USED BUT CORRECT DESIGN IS ESSENTIAL.
3. MECHANICAL ANCHOR JOINTS. USUALLY FOR SPIGOT SOCKET PIPES OVER 600MM DIAMETER AND/OR ABOVE 16BAR OPERATING PRESSURE.
4. USE OF CONTINUOUS PIPE METHOD E.G. WELDED STEEL OR WELDED POLYETHYLENE.

ALL METHODS REQUIRE SELF ANCHORING ASSEMBLY TO VALVE.

- NOTES:**
1. MILD STEEL EXTENSION SPINDLE REQUIRED WHERE VALVE CAP EXCEEDS 300 BELOW COVER. VALVE STEM, EXTENSION SPINDLE AND CAP TO BE PRE-DRILLED AND FITTED WITH SET BOLTS TO ENSURE POSITIVE AND PERMANENT FIXING. SPINDLE LENGTH TO ENSURE CAP IS APPROX. 100 BELOW COVER. CONTRACTOR SHALL CHECK EXACT DIMENSIONS ON SITE PRIOR TO FABRICATION.
  2. COVER SLAB (80-300) IN FIELD, VERGE & STONED TRACK:- FRAME TO BE SET IN AN IN-SITU CONCRETE SURROUND
  3. ALL CONCRETE TO BE MIN. GRADE GEN3.
  4. MILD STEEL GALVANISED TO BS EN ISO 1461.
  5. ALL VALVES TO BE CLOCKWISE CLOSING.

P1	PRELIMINARY ISSUE	SC	LG	AT	21/11/17
Issue	Description	Drwn.	Ckd.	Appd.	Date



**STANDARD DETAILS**

Scale AS SHOWN

Title STANDARD SLUICE VALVE ARRANGEMENTS AND MISCELLANEOUS DETAILS

Drawing No. SELF-LAY-STD-0001 Issue P1