



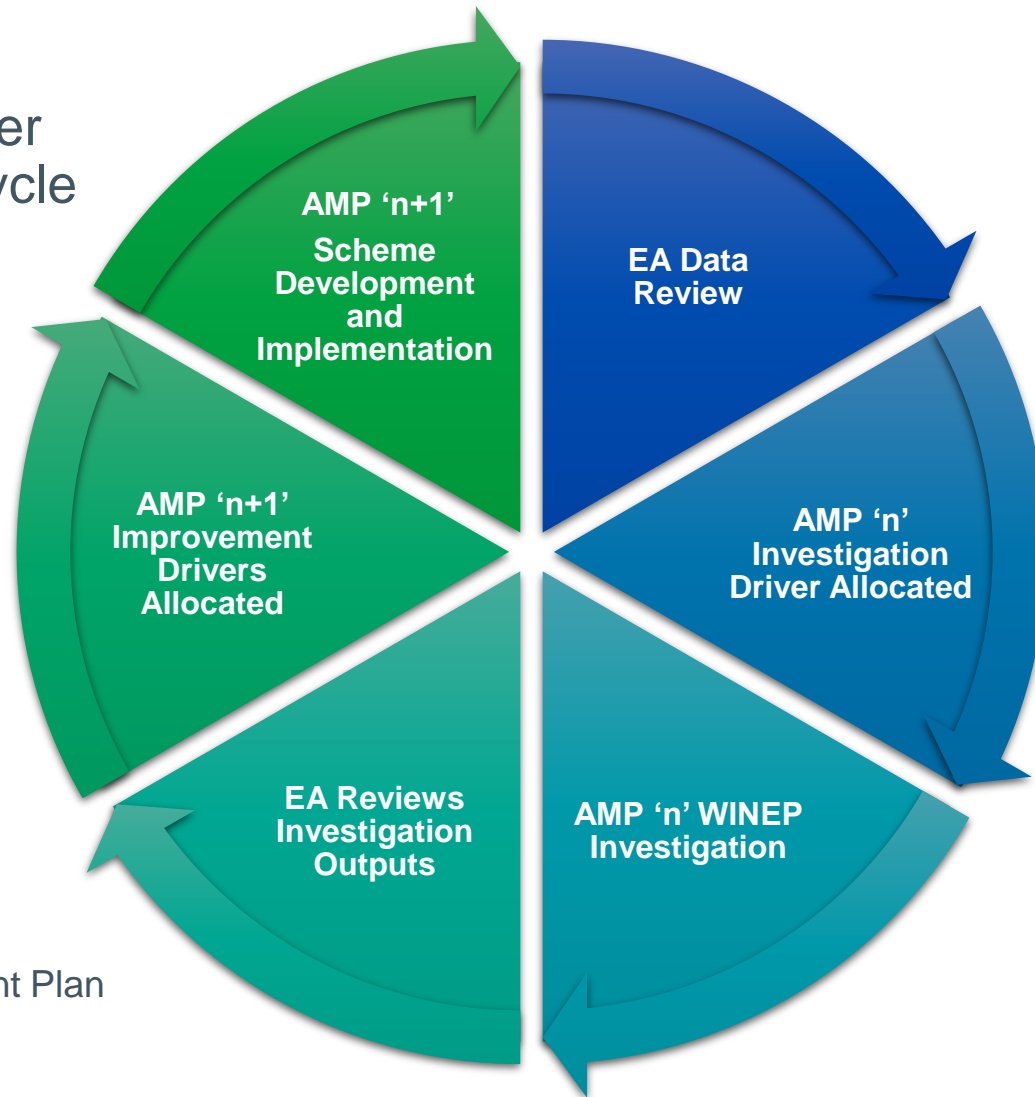
South West
Water

Bathing and Shellfish Water Improvement Programme AMP7

BeachWise Meeting
17th May 2019

- Bathing & Shellfish Water Project Cycle
- AMP7 Ambition Investigations Programme
- Update on Progress for Improvement Measures
- Questions

Bathing & Shellfish Water Programme Cycle



AMP – Asset Management Plan
(5-year cycle)



BW_INV

•Investigations

- Plymouth IUDM
- Combe Martin
- Looe
- Ilfracombe (Hele & Wildersmouth)
- Mounts Bay (Long Rock and Marazion)
- Broadsands
- Summerleaze
- Budleigh Salterton
- Challaborough
- Croyde
- Goodrington
- Gorran Haven
- Maenporth
- Paignton (Paignton & Preston Sands)
- Polkerris
- Readymoney
- Shaldon
- Torre Abbey
- Wembury
- Lyme Regis

BW_INV Programme

- Compliance date of 31st March 2021 - early to inform PR24
- Completed and signed off the Measure Specification Forms collaboratively with the EA to best utilise data already held within EA, prevent duplicate working and target the investigations effectively
- Scopes are bespoke to each catchment
- Sampling to start in Summer this year
 - MST prep

SW_INV1 Programme

- Compliance date of 30th September 2021 – to inform AMP8
- Investigations will cover a range of issues including;
 - Hydraulic modelling of the sewer network
 - Water quality sampling (STWs, coastal and watercourses)
- Scopes are bespoke to each catchment
- Measure Specification Forms signed off and agreed with the EA.
- Sampling work to start in Summer



SW_INV1

•Investigations

- Oxen Cove, Brixham
- St Austell Bay
- Start Bay
- Tregony and North Fal

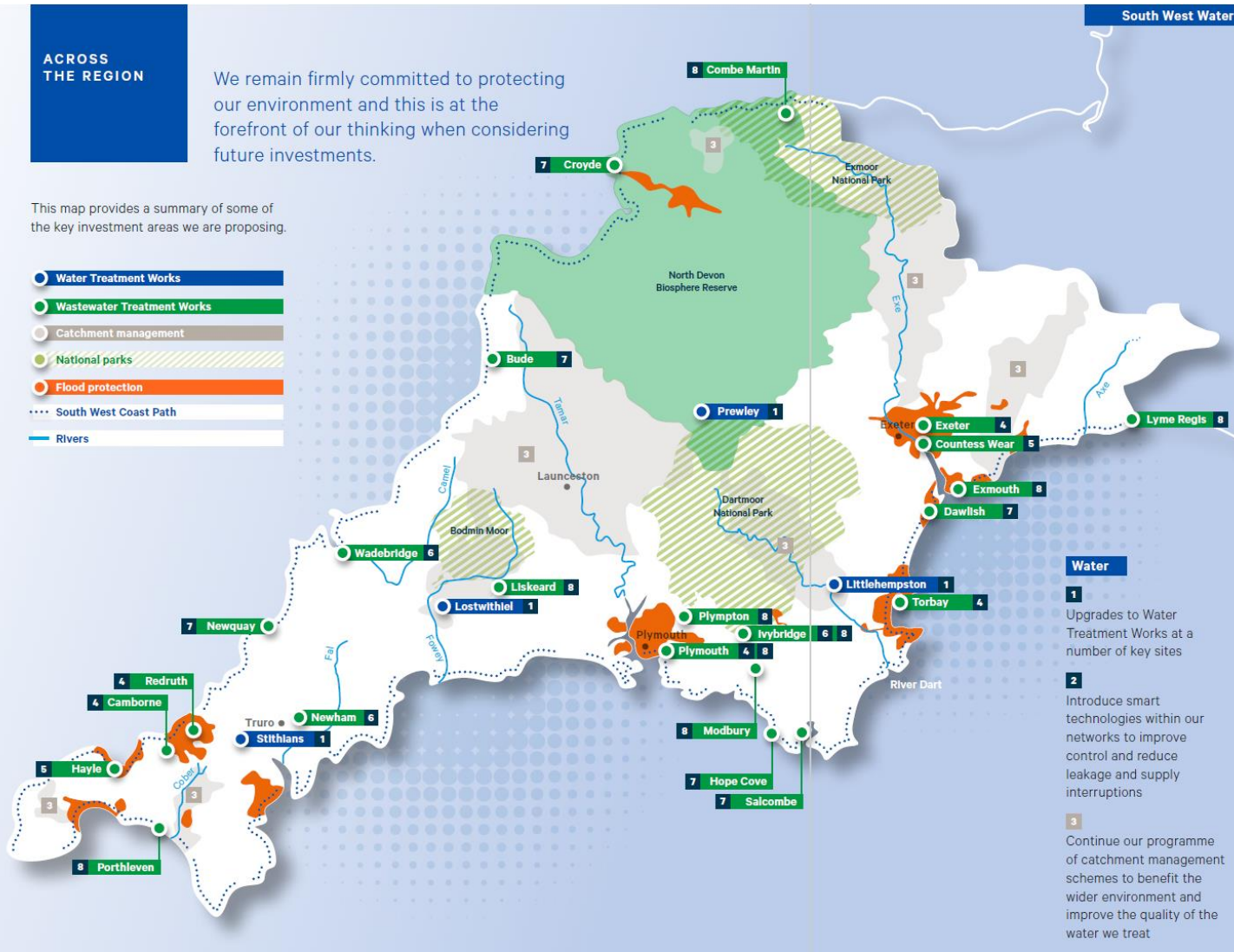
Investment programme – over £1bn

ACROSS THE REGION

We remain firmly committed to protecting our environment and this is at the forefront of our thinking when considering future investments.

This map provides a summary of some of the key investment areas we are proposing.

- Water Treatment Works
- Wastewater Treatment Works
- Catchment management
- National parks
- Flood protection
- ⋯ South West Coast Path
- Rivers



South West Water | Bournemouth Water



Water

- 1** Upgrades to Water Treatment Works at a number of key sites
- 2** Introduce smart technologies within our networks to improve control and reduce leakage and supply interruptions
- 3** Continue our programme of catchment management schemes to benefit the wider environment and improve the quality of the water we treat

Wastewater

- 4** Improve surface water drainage in key areas in order to prevent flooding and reduce the burden placed on sewers during heavy rainfall
- 5** Installation of odour monitoring equipment at Wastewater Treatment Works
- 6** Ensure robust flood protection measures are in place for key sites
- 7** Invest in upgrading critical sea outfalls to help maintain water quality across the region
- 8** Introduce and test sustainable innovative drainage schemes to reduce flooding risk
- 9** Upgrade our treatment processes to prevent microplastics in sewage entering watercourses

Update on Improvement Measures

- Combe Martin
- East Looe
- Ilfracombe – Wildersmouth

- Bude
- Hope Cove
- Salcombe

AMP7 Bathing and Shellfish Water Improvement Programme

Any Questions?



**South West
Water**