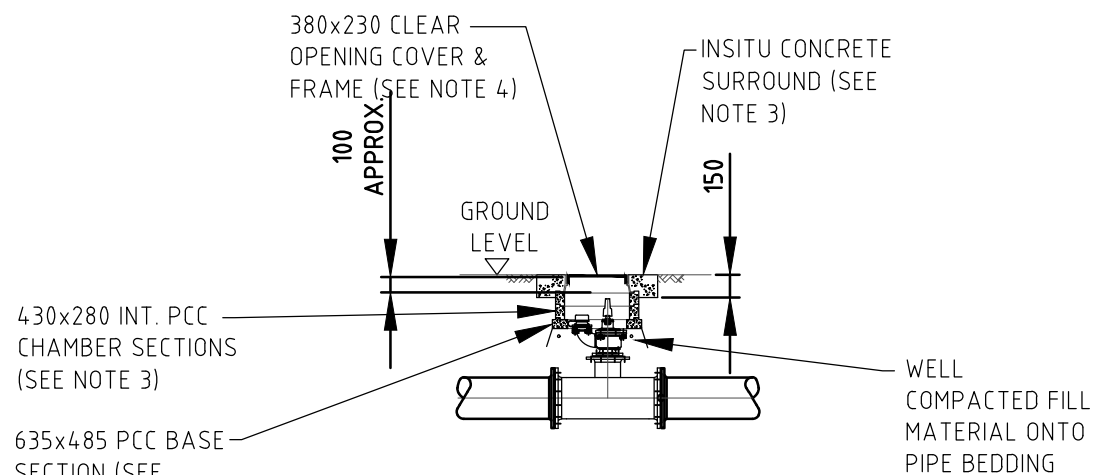
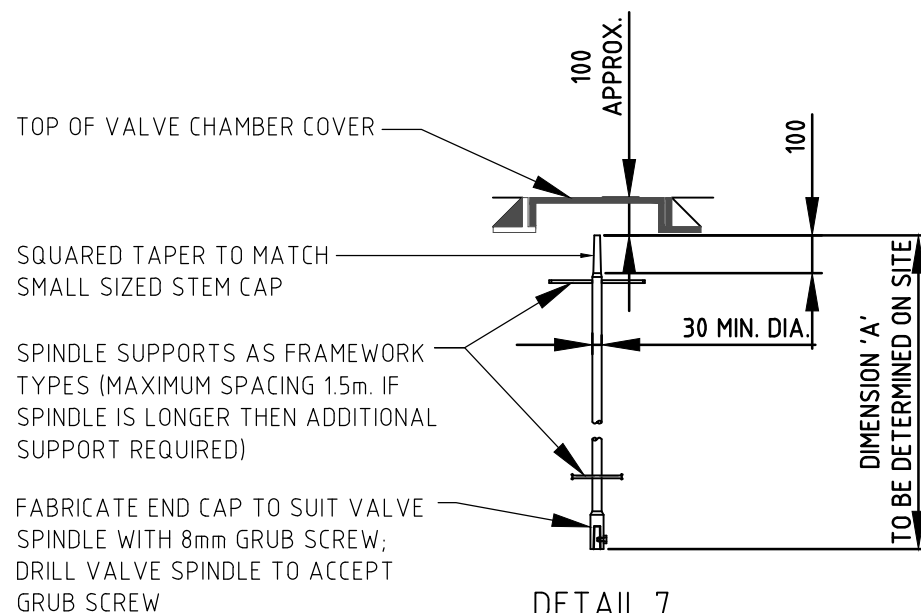


**DETAIL 2**  
COVER TO MAIN > 1.2



**DETAIL 1**  
COVER TO MAIN < 1.2  
SCALE 1:25 (80-300 DIA. UP TO 10 BAR)



**DETAIL 7**  
N.T.S.

NOTE: ALL HYDRANTS  
TO BE IN ACCORDANCE  
TO BS 750

**NOTES:**

1. IN FIELD, VERGE & STONED TRACK:- FRAME SHALL BE SET IN AN IN-SITU CONCRETE SURROUND. IN OTHER LOCATIONS:- NO CONCRETE SURROUND UNLESS OTHERWISE SPECIFIED.
2. COVERS & FRAMES TO BE VENTILATED (UNSEALED) AND TO LOAD CLASS B125 IN FIELDS AND UNTRAFFICKED AREAS OR LOAD CLASS D400 IN TRAFFICKED ROADS AND TRACKS.
3. ALL CONCRETE TO BE MIN. GRADE GEN3.
4. THERE IS NO REQUIREMENT FOR END RESTRAINT ON MAINLINE AT AIR VALVES OR WASHOUTS SO TEE PIECE MAY BE SOCKETED (WITH FLANGED BRANCH) OR ALL FLANGED. NO ROCKER PIPE OR DISMANTLING JOINT IS NECESSARY FOR EITHER INSTALLATION.
5. IF AV OR WO HAS AN ADJACENT SLUICE VALVE THEN THERE WILL BE A REQUIREMENT FOR END RESTRAINT, A DISMANTLING JOINT & ROCKER PIPES (SEE NOTE A). A SPACER PIPE MAY ALSO BE REQUIRED TO ENSURE A MIN. OF 300 BETWEEN CHAMBERS.
6. FOR PRESSURES BETWEEN 16 & 25 BAR USE PN25 FITTINGS & FLANGES. FOR PRESSURES LESS THAN 16 BAR USE PN16 FITTINGS & FLANGES.

P1	PRELIMINARY ISSUE	SC	LG	AT	21/11/17
Issue	Description	Drwn.	Ckd.	Appd.	Date



STANDARD DETAILS

Scale AS SHOWN

Title THROUGH BORE HYDRANT

Drawing No. SELF-LAY-STD-0003 Issue P1

NOTE  
ALL ARRANGEMENTS ON THIS DRAWING ARE MECHANICALLY RESTRAINED. TRUST BLOCKS MAY BE USED FOR RESTRAINT IF RESTRAINED FITTINGS ARE NOT SUITABLE.